

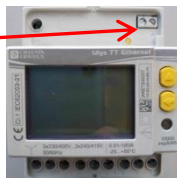
## Quick COMMISSIONING

### Three-phase meter on current transformers (ULYS TT)

Message when switched on:



Press the SET button for at least 3 seconds



Press



then  
to increment  
the digit



Confirm by



CT is the ratio of the primary to the secondary of the CT  
Example: CT 100/5A => ratio Ct = 20

Go to the next  
parameter : FSA



Press



then  
to change  
the digit



Confirm by



FSA is the secondary current of the CT  
Example: CT 100/1A => FSA = 1



Press for at least 3 seconds



Press again to confirm

